



Dallas County Health and Human Services 2011-2012 Influenza Surveillance Program

CDC Week 52 -- Week ending December 31, 2011

Epidemiologic Overview

- During week 52, there continued to be minimal flu activity reported in Dallas County.
- 33% (163/488) of rapid antigen tests were positive for RSV during the week ending December 31, 2011.

Figure 1: Influenza Laboratory Surveillance: Dallas: County Providers, Hospitals, & Viral Labs

Week Ending	Nov 5	Nov 12	Nov 19	Nov 26	Dec 3	Dec 10	Dec 17	Dec 24	Dec 31
CDC Week	44	45	46	47	48	49	50	51	52
# Influenza Tests Performed Weekly	305	412	331	280	304	346	406	232	358
# Total Positive Influenza Tests ¹	5	1	8	7	7	8	6	2	2
% Positive Influenza Tests	1.6	0.2	2.4	2.5	2.3	2.3	1.5	0.9	0.6
# Positive A Influenza ²	1	1	2	3	3	2	4	1	1
# Positive B Influenza	3	0	6	3	3	6	2	1	1
# Non-differentiated Influenza ³	1	0	0	0	1	0	0	0	0
# Influenza Hospitalizations ⁴	2	0	0	1	1	0	0	1	0
# Influenza-associated Deaths ⁵	0	0	0	0	0	0	0	0	0
# Influenza-associated Deaths of non-Dallas County Residents ⁶	0	0	0	0	0	0	0	0	0

¹ Includes positive, rapid antigen, PCR, and culture results.

² Further subtyping results are performed only for specimens referred by institutions for PCR-testing.

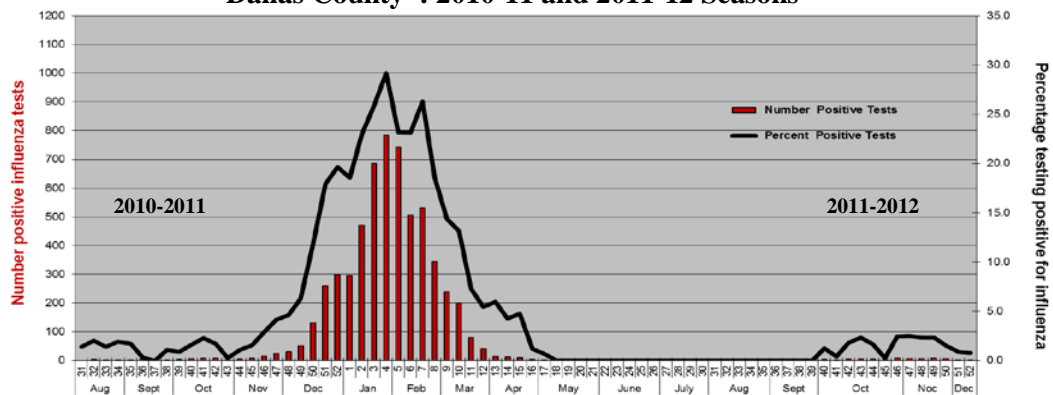
³ Non-differentiated refers to institutional rapid test results which did not differentiate between influenza A and B.

⁴ Reflects all influenza-associated hospitalizations reported from hospitals located within Dallas County.

⁵ Deaths reported of residents of Dallas County, with laboratory-confirmation of influenza by rRT- PC.

⁶ Reflects deaths of non-Dallas County residents occurring in Dallas County hospitals.

Figure 2: Number and Percentage Positive Influenza Tests by Week, Dallas County*: 2010-11 and 2011-12 Seasons



*Data for Week 52 obtained from the same surveillance sites as designated for DCHHS' seasonal influenza program, with over 20 participating Dallas area hospitals, urgent care centers, and sentinel providers.

CDC Flu View report* for Week 52 (December 25 – December 31, 2011)

- During week 52, influenza activity increased in the United States, but remains relatively low. Of the 3310 specimens tested by WHO and NREVSS, 2.9% were positive for influenza.
- The proportion of deaths attributed to pneumonia and influenza (P&I) was below the epidemic threshold.
- No influenza-associated pediatric deaths have been reported during the 2011-2012 influenza season.
- The proportion of outpatient visits for influenza-like illness (ILI) was 1.7%, which is below the national baseline of 2.4%.

* From CDC Flu View report

Figure 3: U.S. Virologic Surveillance: WHO/NREVSS 2011-12 Season*

Influenza Positive Tests by influenza type and subtype reported to CDC during the week ending 12/31/2011

	Week 52
No. of specimens tested	3,310
No. of positive specimens (%)	95 (2.9%)
Positive specimens by type/subtype	
Influenza A	85 (89.5%)
A (2009 H1N1)	0 (0.0%)
A (subtyping not performed)	40 (52.9%)
A (H3)	45 (47.1%)
Influenza B	10 (10.5%)

* <http://www.cdc.gov/flu/weekly>

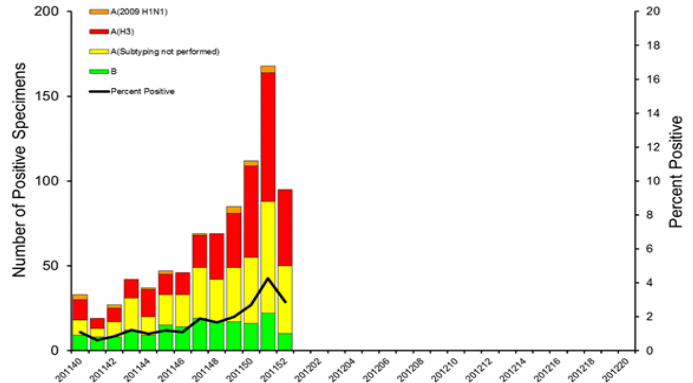
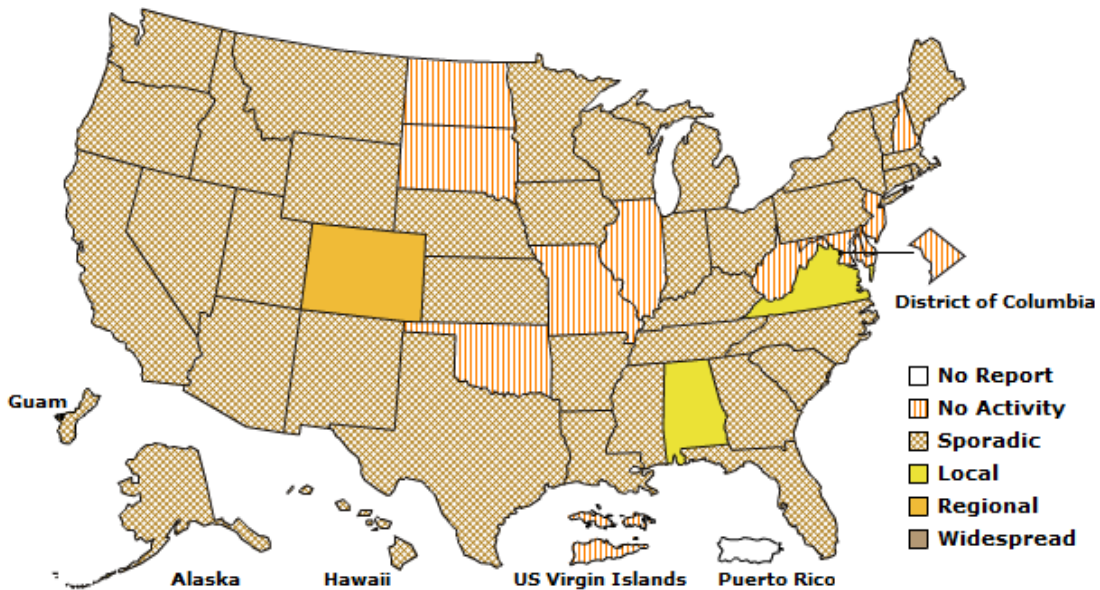


Figure 4: Weekly Influenza Activity Estimates Reported by State and Territorial Epidemiologists*
Week Ending December 31, 2011



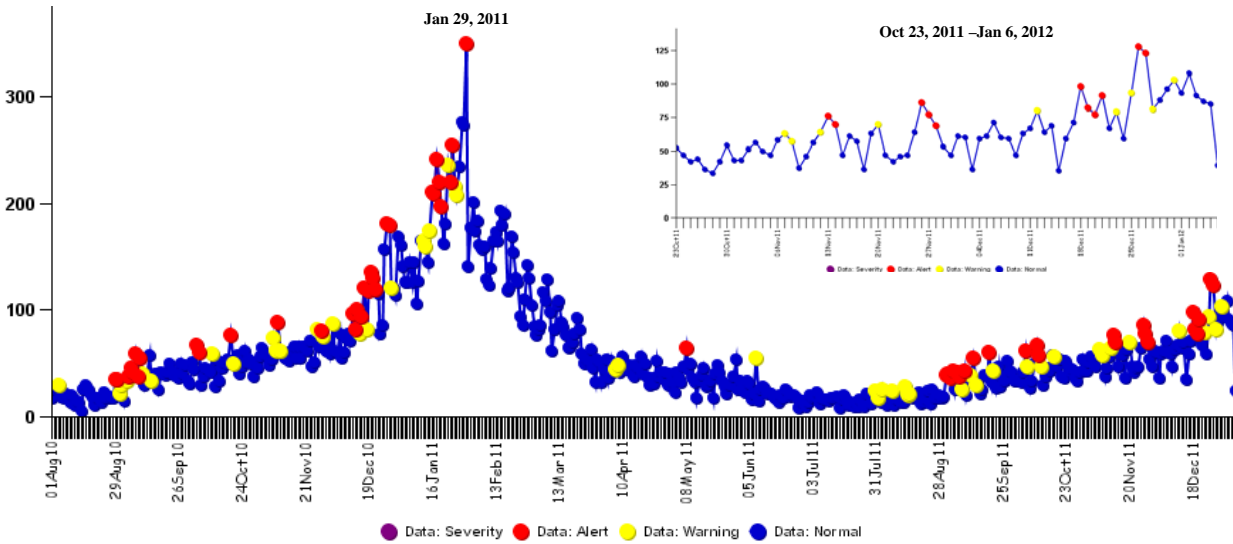
*This map indicates geographic spread and does not measure the severity of the influenza activity.

* From CDC Flu View report

Please Report any of the Following Influenza Patients to DCHHS at (214) 819-2004 within 1 working day:

- Hospitalized patients with influenza (any subtype). Confirmation can be by any laboratory test, rapid antigen, culture, PCR, DFA/IFA, or performed in an outpatient or inpatient laboratory.
- Deaths of persons with confirmed influenza (any subtype). We are requesting all pediatric influenza-associated deaths to be reported *immediately* to facilitate specimen procurement and testing.
- Suspected influenza infections involving a resident of any Long Term Care Facility (please report *immediately*), or institutional outbreaks.

**Figure 5: ESSENCE Syndromic Surveillance for Influenza-like Illness: Dallas County
August 1, 2010 – January 6, 2012**



Data obtained from hospitals participating in the Electronic Surveillance System for the Early Notification of Community-based Epidemics (ESSENCE) from August 1, 2010, through the present. Depicted are the numbers of persons presenting to Emergency Departments in 22 Dallas County hospitals with self-reported chief complaints of influenza-like illness.

**Figure 6: Number and Percent Positive RSV Rapid Antigen Tests, NREVSS
Surveillance Data, North Texas: August 2010 – December 31, 2011**

	Oct 22	Oct 29	Nov 5	Nov 12	Nov 19	Nov 26	Dec 3	Dec 10	Dec 17	Dec 24	Dec 31
CDC Week	42	43	44	45	46	47	48	49	50	51	52*
# Tests Performed Weekly	174	183	284	237	250	232	342	325	330	425	488
# Total Positive RSV Tests	4	2	9	5	13	13	32	34	54	126	163
% Positive RSV Tests	2.3	1.1	3.2	2.1	5.2	5.6	9.4	10.5	16.4	29.6	33.4

* Indicates preliminary data which is subject to change, as adjustments are made for late-arriving data

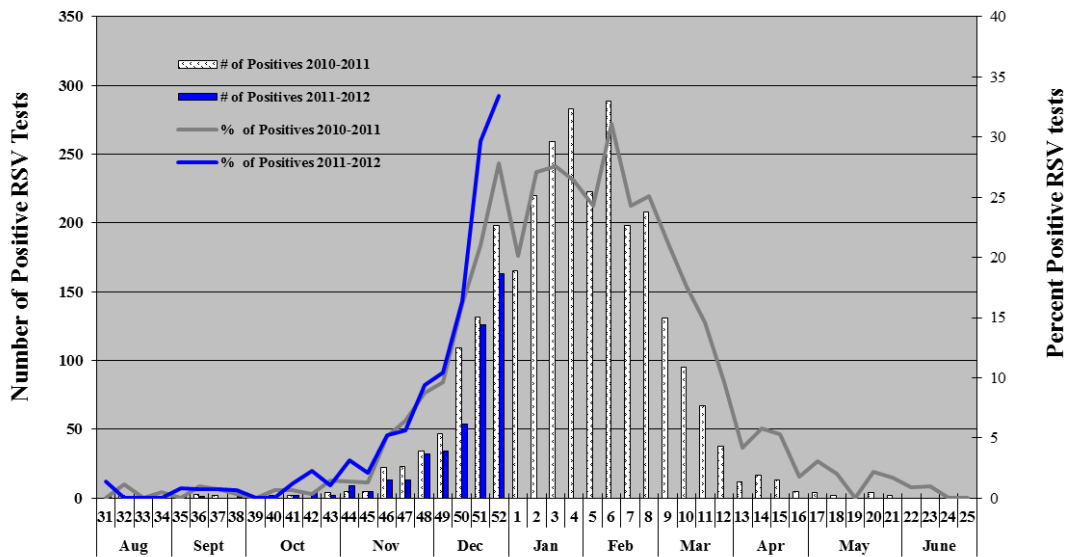
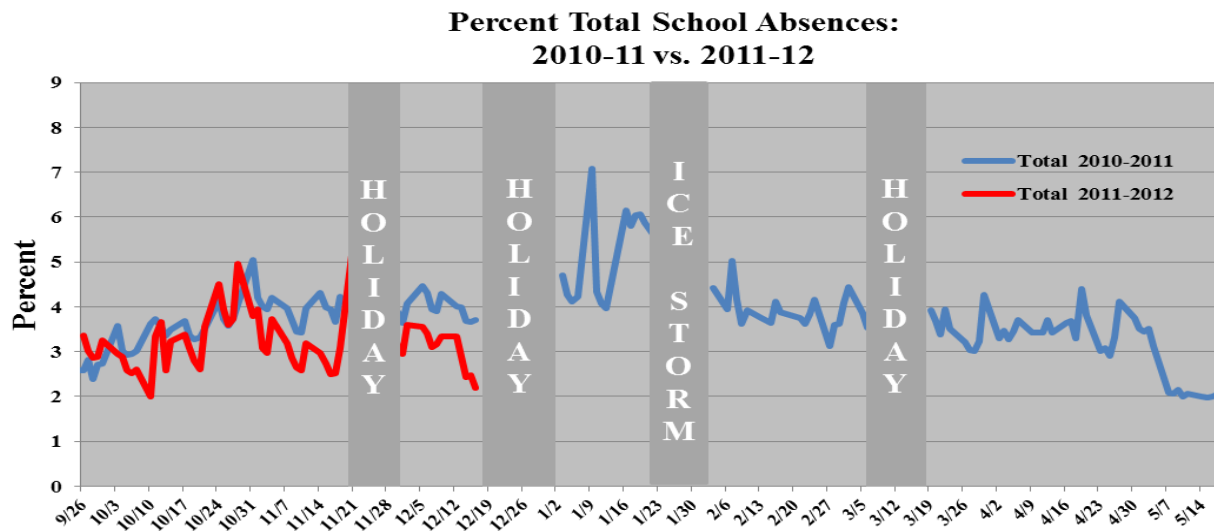


Figure 7: Percentage of Total Student Absences and Percentage of Absences due to Influenza-like Illness: Reported from 14 Independent School Districts in Dallas County:



- School absences and influenza-like illnesses are reported voluntarily from 14 Independent School Districts, representing over 510 elementary, middle, and secondary schools and over 420,000 students in Dallas County.
- Data are submitted from additional charter and private schools on a voluntary basis.
- Data trends are also followed on an individual basis by school and an aggregate basis by districts.

Please send inquiries to DCHHS: Influenza@dallascounty.org

Elizabeth Hull Smith, RN MHA, Epidemiology Surveillance Coordinator

Joey Stringer, Ed Bannister PhD, LRN Laboratory

Wendy Chung, MD MSPH, Chief Epidemiologist

Steven Wilson, MD, Health Authority, Medical Director

Zachary Thompson, MA, Director