



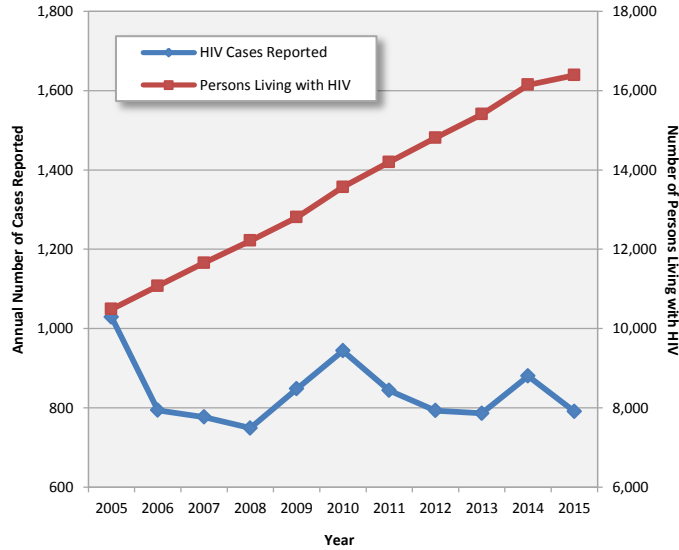
2015 Profile of HIV in Dallas County

Dallas County Health and Human Services

New HIV Diagnoses and Persons Living with HIV, 2015

	New HIV Diagnoses		Persons Living with HIV	
	n	Incidence per 100,000	n	Incidence per 100,000
Total	791	30.9	16,387	641.8
Sex				
Male	651	51.8	13,249	1,053.7
Female	140	10.8	3,138	242.1
Race/Ethnicity				
Black	389	67.4	7,000	1,212.1
White	170	21.3	4,851	607.9
Hispanic	198	19.6	3,762	372.7
Other	14	8.3	180	106.7
Age Group (years)				
0-1	2	2.5	2	2.5
2-12	1	0.2	14	3.3
13-24	202	47.2	747	174.5
25-34	271	66.1	3,212	783.7
35-44	154	43.0	3,958	1,104.5
45-54	116	35.1	5,081	1,539.4
≥55	45	8.6	3,373	643.7
Mode of Transmission	n	%	n	%
Men Who Have Sex with Men (MSM)	585	74.0%	11,249	68.7%
Heterosexual	138	17.5%	3,207	19.6%
Injection Drug Use (IDU)	43	5.4%	1,134	6.9%
MSM/IDU	21	2.7%	698	2.9%
Pediatric	3	0.4%	88	0.5%

New HIV Cases and Cumulative Numbers of Persons Living with HIV in Dallas County, 2005-2015



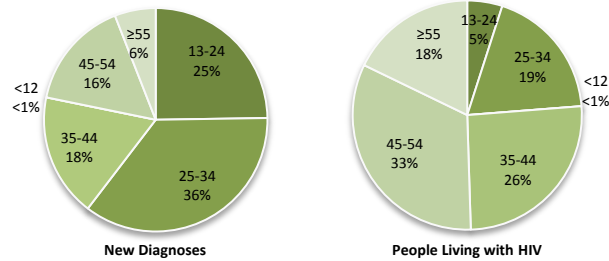
Synopsis of HIV Trends in Dallas County, 2005-2015

- The number of new persons diagnosed with HIV in 2015 has decreased by 23% since 2005.
- In 2015, it was estimated that about 16,387 people were living with HIV in Dallas County, representing an increase of 56% since 2005.
- From 2011 through 2014, 30% of all newly diagnosed persons in Dallas County progressed to a concurrent AIDS diagnosis within 12 months of initial HIV diagnosis.
- Case rates remain disproportionately higher in African Americans, similar to trends observed in larger urban areas in the US.
- In 2015, 60% of new HIV diagnoses were in persons less than 35 years of age.

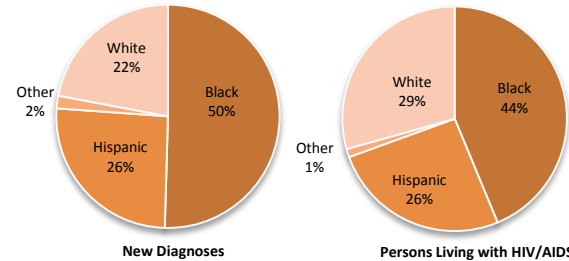
Data Sources: Dallas County Health and Human Services and Texas Department of State Health Services, October 2016.

- Data for new HIV/AIDS diagnoses for this report were calculated based on the earliest available diagnosis date for HIV infection. The data represent these new cases by year of initial diagnosis, and have been adjusted for reporting delay. Data is subject to updates and adjustments as needed.
- Numbers of Persons Living with HIV/AIDS (PLWHA) are based on most recent known address as of 2015, which include some of out of state diagnosed cases that have since moved to Texas, and exclude people that have recently moved out of state. Numbers have been adjusted for deaths with existing registry information, but is subject to change.
- Sums of subgroups may not equal total because of unknown or unspecified classification categories.

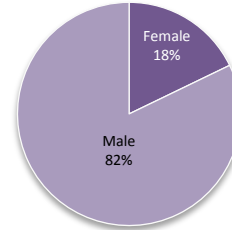
HIV in Dallas County by Age Group



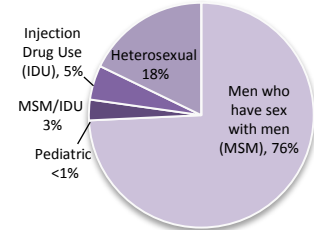
HIV in Dallas County by Race/Ethnicity



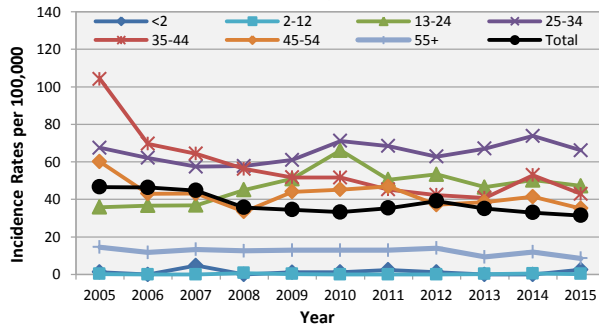
New HIV Diagnoses by Gender



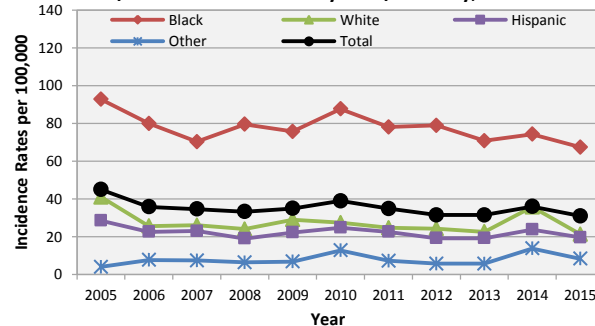
New HIV Diagnoses by Exposure



HIV Incidence Rates by Age Groups, 2005-2015



HIV/AIDS Incidence Rates by Race/Ethnicity, 2005-2015



Persons Living with HIV/AIDS Prevalence Rates by Race/Ethnicity, 2005-2015

