



Dallas County Health and Human Services 2011-2012 Influenza Surveillance Program

2011-2012 Influenza Summary Draft

Epidemiologic Summary

- The seasonal influenza surveillance program has concluded for 2011-2012.
- The predominant circulating strain in the area has been influenza A (2009 H1N1), comprising 72% of viruses tested locally.
- There were 149 Hospitalizations and 18 ICU Admissions during the 2011-12 influenza season.
- One influenza death reported for the 2011-2012 season.

Figure 1. Influenza Laboratory Surveillance: Dallas: County Providers, Hospitals, & Viral Labs

Week Ending	Mar 24	Mar 31	Apr 7	Apr 14	Apr 21	Apr 28	May 5	May 12	May 19	May 26
CDC Week	12	13	14	15	16	17	18	19	20	21
# Influenza Tests Performed Weekly	1183	966	932	821	762	387	287	528	341	292
# Total Positive Influenza Tests ¹	180	116	66	51	29	19	15	19	6	9
% Positive Influenza Tests	15.2	12.0	7.1	6.2	3.8	4.9	5.2	3.6	1.7	3.1
# Positive A Influenza ²	147	90	49	29	16	6	6	11	1	1
# Positive B Influenza	29	25	17	20	11	13	9	8	5	8
# Non-differentiated Influenza ³	4	1	0	2	2	0	0	0	0	0
# Influenza Hospitalizations ⁴	14	16	5	2	4	3	0	0	0	0
# Influenza-associated Deaths ⁵	0	0	0	0	0	0	0	0	0	0
# Influenza-associated Deaths of non-Dallas County Residents ⁶	0	0	0	0	0	0	0	0	0	0

¹ Includes positive, rapid antigen, PCR, and culture results.

² Further subtyping results are performed only for specimens referred by institutions for PCR-testing.

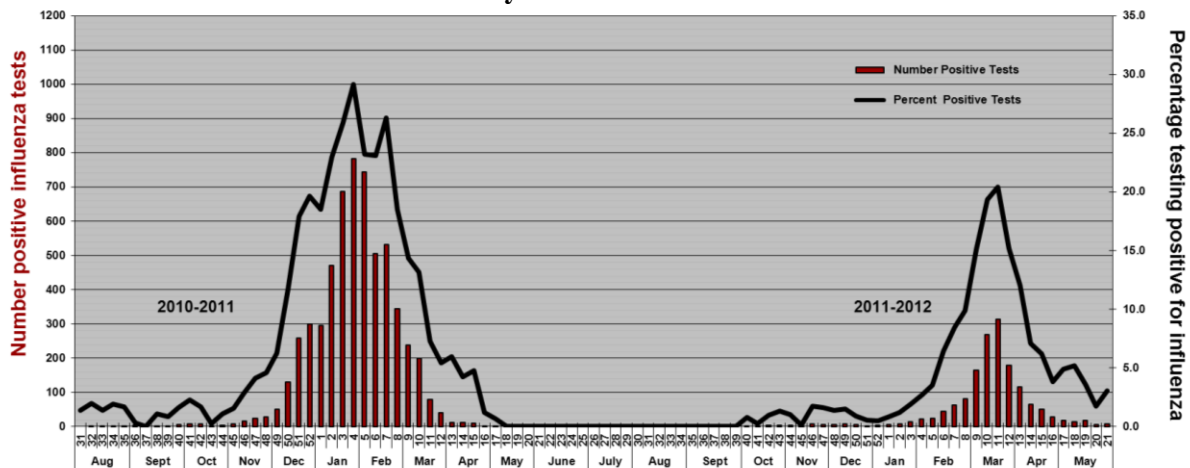
³ Non-differentiated refers to institutional rapid test results which did not differentiate between influenza A and B.

⁴ Reflects all influenza-associated hospitalizations reported from hospitals located within Dallas County.

⁵ Deaths reported of residents of Dallas County, with laboratory-confirmation of influenza by rRT- PC.

⁶ Reflects deaths of non-Dallas County residents occurring in Dallas County hospitals.

Figure 2. Number and Percentage Positive Influenza Tests by Week, Dallas County*: 2010-11 and 2011-12 Seasons



*Data for Week 21 obtained from designated surveillance sites for DCHHS' seasonal influenza program, with over 20 participating Dallas area hospitals, urgent care centers, and sentinel providers.

Figure 3. U.S. Virologic Surveillance: WHO/NREVSS 2011-12 Season*
Influenza Positive Tests by Type and Subtype Reported to CDC during the week ending 5/26/2012

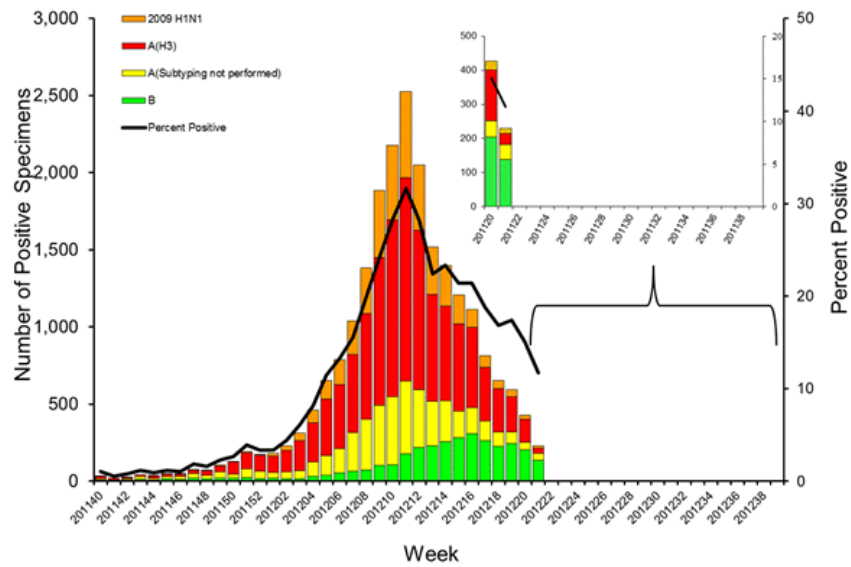


Figure 6. Dallas County LRN Influenza PCR Test Results:
 October 2, 2011- May 26, 2012
 (N=297)

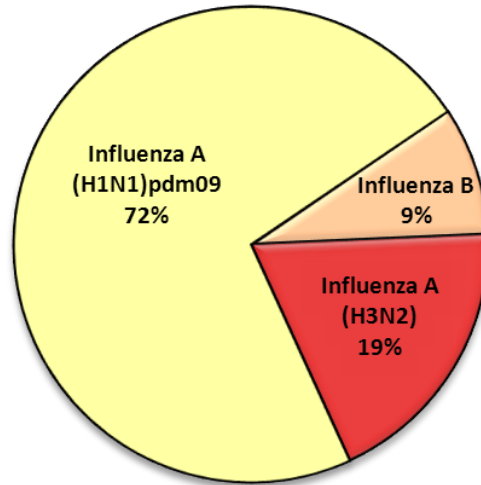


Figure 7. Characteristics of Influenza Hospitalizations, Dallas County Residents: September 25, 2011 – May 26, 2012

	N=149*
Influenza Subtype (n**= 86)	Influenza A (H3N2) (21%); A (2009 H1N1) (66%); B (13%)
Gender	Female (53%)
Race/Ethnicity	White (27%); Hispanic (36%); Black (34%); Asian (1%); Other (2%)
Median Age	24 years (Range: 22 days – 88 years)
Presence of ≥ 1 underlying medical condition or age < 2 years old	76%
Primary Reason for Admission	Respiratory Distress/SOB (71); Pneumonia (10); Seizures (1)
ICU Admissions	18 (12%)
Deaths	1

* Data reflect all influenza related hospitalizations reported to DCHHS with any positive influenza test
 ** Data are for PCR-confirmed influenza hospitalizations

Figure 8. Hospitalized Influenza Patients by Date of Admission, Dallas County: September 25, 2011 – May 26, 2012 (N=149)

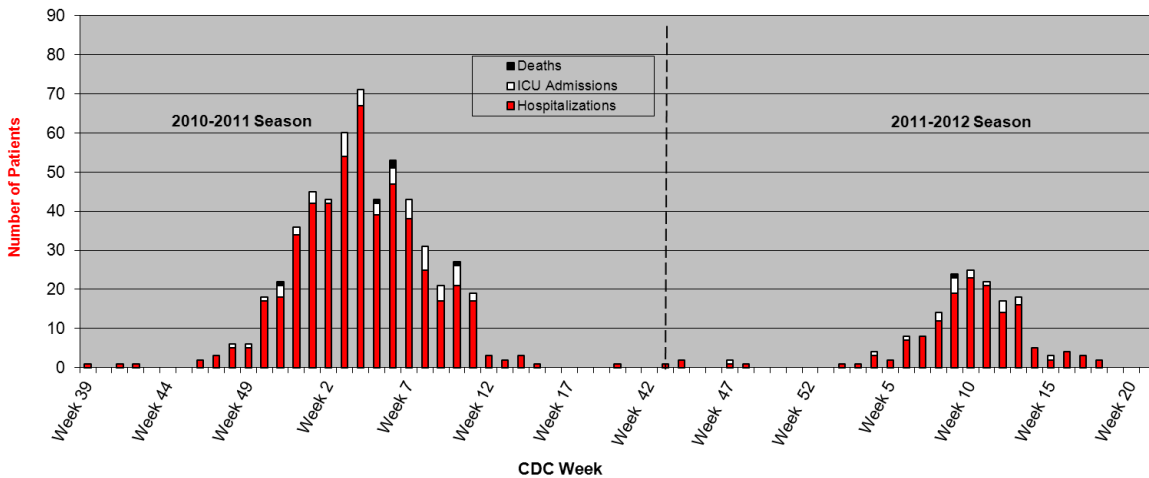
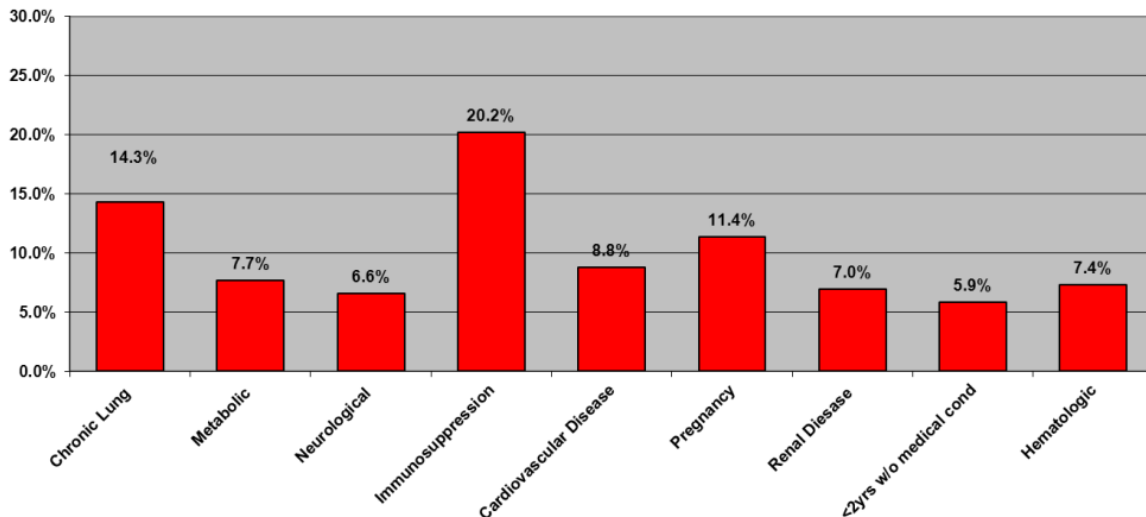
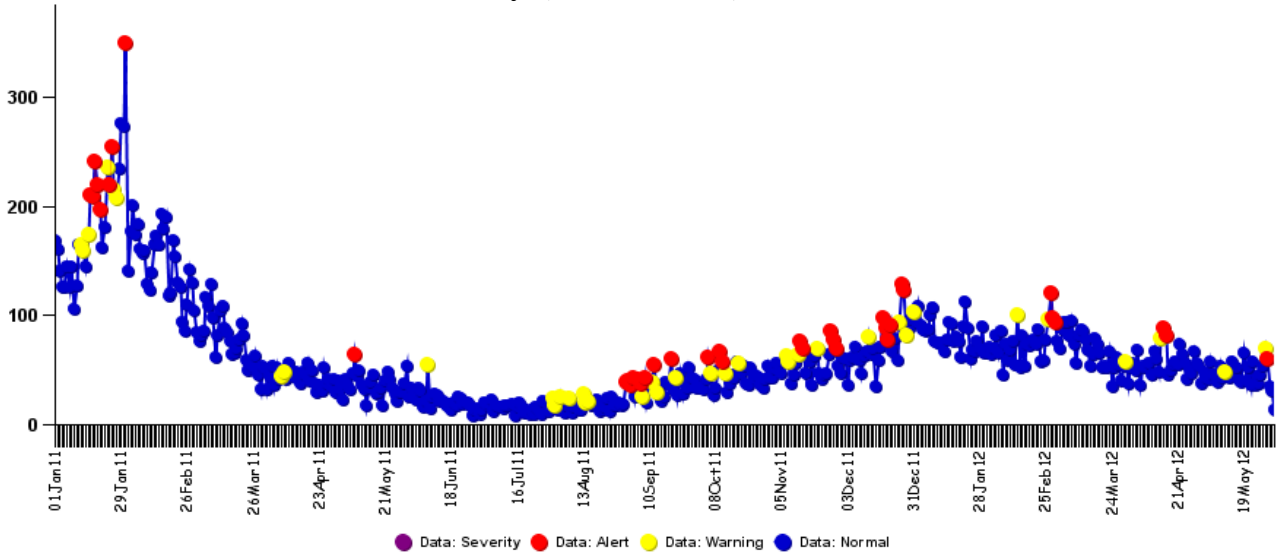


Figure 9. Percent of Hospitalized Confirmed Influenza Cases with a Known Underlying Medical Condition, Dallas County: September 25, 2011 – May 26, 2012 (N=272)*



*Categories are not mutually exclusive

**Figure 10. ESSENCE Syndromic Surveillance for Influenza-like Illness: Dallas County
January 1, 2011 – June 1, 2012**



Data obtained from hospitals participating in the Electronic Surveillance System for the Early Notification of Community-based Epidemics (ESSENCE) from January 1, 2011, through the present. Depicted are the numbers of persons presenting to Emergency Departments in 22 Dallas County hospitals with self-reported chief complaints of influenza-like illness.

**Figure 11: Number and Percent Positive RSV Rapid Antigen Tests, NREVSS
Surveillance Data, North Texas: August 2010 – May 26, 2012**

	Mar 10	Mar 17	Mar 24	Mar 31	Apr 7	Apr 14	Apr 21	Apr 28	May 5	May 12	May 19	May 26
CDC Week	10	11	12	13	14	15	16*	17	18*	19*	20*	21
# Tests Performed Weekly	492	446	285	325	257	269	313	207	171	163	159	24
# Total Positive RSV Tests	93	89	41	33	23	17	9	4	5	2	1	0
% Positive RSV Tests	18.9	20.0	14.4	10.2	8.9	6.3	2.9	1.9	2.9	1.2	0.6	0

* Indicates preliminary data which is subject to change, as adjustments are made for late-arriving data

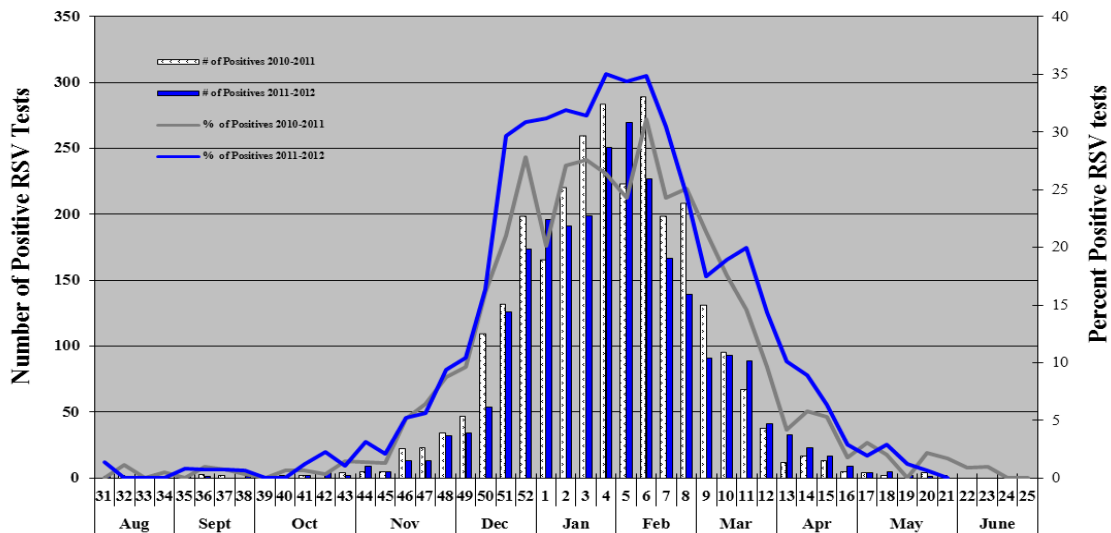
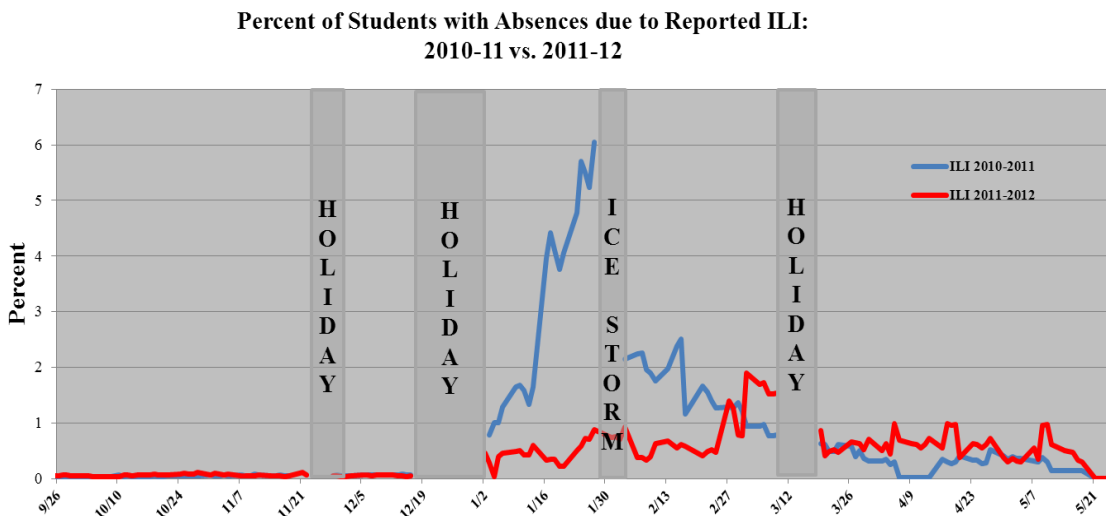
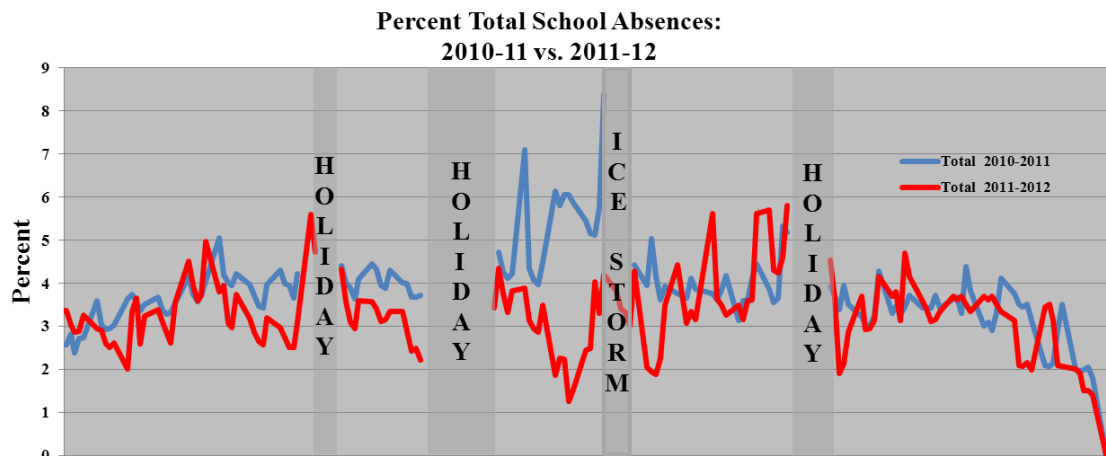


Figure 12. Percentage of Total Student Absences and Percentage of Absences due to Influenza-like Illness, reported from 14 Independent School Districts in Dallas County: September 26, 2010 – May 26, 2012



Please report any of the following influenza patients to DCHHS at (214) 819-2004 within 1 working day:

- Hospitalized patients with influenza (any subtype). Confirmation can be by any laboratory test, rapid antigen, culture, PCR, DFA/IFA, or performed in an outpatient or inpatient laboratory.
 - Deaths of persons with confirmed influenza (any subtype). We are requesting all pediatric influenza-associated deaths to be reported *immediately* to facilitate specimen procurement and testing.
 - Suspected influenza infections involving a resident of any Long Term Care Facility (please report *immediately*), or institutional **outbreaks**.
- School absences and influenza-like illnesses are reported voluntarily from 14 Independent School Districts, representing over 510 elementary, middle, and secondary schools and over 420,000 students in Dallas County.
 - Data are submitted from additional charter and private schools on a voluntary basis.
 - Data trends are also followed on an individual basis by school and an aggregate basis by districts.

Please send inquiries to DCHHS: Influenza@dallascounty.org

Elizabeth Hull Smith, RN MHA, Epidemiology Surveillance Coordinator
 Joey Stringer, Ed Bannister PhD, LRN Laboratory
 Wendy Chung, MD, MSPH, Chief Epidemiologist
 Christopher Perkins, DO Health Authority, Medical Director
 Zachary Thompson, MA, Director